

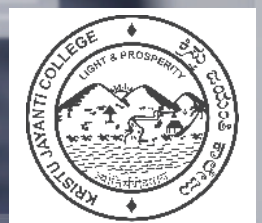


iON

TATA CONSULTANCY SERVICES

Hardware + Network + Software + Services

## Redefine Your Operating Processes - The iON Way



*Being one of the prime models of its kind we understand the challenge that iON has taken up, given our varied requirements. Our organization integrates diverse programmes and unique execution patterns. The way we look at, ERPs like iON not only function as a delivery platform, but also as a solution which helps us in redefining our operating procedures with its design and functional competencies.*

**Fr. Augustine George,**  
Chief Coordinator and Mentor for iON Solution,  
(HOD, Comp. Sc., Dir- International Affairs,)

## The Business

**Profile:** Kristu Jayanti College was rated among the top 10 commerce colleges in Bangalore in the India Today -Nielsen survey 2010 & 2011. KJC is affiliated to Bangalore University and recognized by UGC.

**Key Departments:** Departments of excellence within KJC are Commerce, psychology, social work, life science and management studies

**Operations:** Founded in 1999, KJC is run by Bodhi Niketan Trust, formed by the members of St. Joseph Province of the Carmelites of Mary Immaculate (CMI). There are approximately 2800 students studying in KJC.

## Situation

### Business Issues

- **Attendance Tracking:** Lack of centralized repository for tracking student attendance and leave data led to inconsistent information. As the college stresses on the importance of attendance, there was a need to keep the parents informed in case of absence of their ward
- **Automated Admission Process:** Manual intervention in admission process led to inconsistent and replicated information. It led to difficulty in tracking various applications received for varied courses
- **Business Analytics:** Reports were required to collate applications received and depict the actions taken by different individuals on an application

## IT Challenges

- Need for a single integrated system that could maintain all relevant data about its students as well as staff. System with intuitive interface was required with necessary role based access controls
- Lack of integration between fee collection and accounting module resulted in a lot of manual work which included posting daily collection in the book of accounts
- Business analytics tool was required for improved decision making

## The iON Way

- **Time Table and Student Attendance:** In addition to setting up time table and tracking attendance, the system defined various leave types a student can apply for, the standard approval workflow for each leave type, document proofs required for various types of leaves applied by the student, and also logic to define whether the student is eligible for attendance on a certain type of leave being approved. The compiled attendance data can be shared with parents and guardians. Using iON, attendance handling can be performed in a timely manner with minimal data redundancy
- **Admissions:** iON managed the end to end task of admission process starting from managing the receipt and processing of online application forms. This facilitated in shortlisting and allotting scholarship to deserving candidates. Reporting tool pulled out details of seat availability in various courses facilitating smooth admission process
- **Fee Collection:** The process was automated and streamlined which enabled the institute to effortlessly manage fees. Fees, which was recorded in system manually, is now automatically posted in books of account. Through the Self Service module, students also can see the fee transaction, start date and due date for fee collection

## To summarize

- Automation leading to integrated and enhanced business processes
- Cost-effective solution with availability of real time information
- Transparent and consistent data to reduce miscommunication
- Scalable solution with low maintenance
- Improved access controls
- Integrated and enhanced business processes

## Relevant Parts of the Software

### E-forms - Online Application Management

#### Campus Management System (CMS)

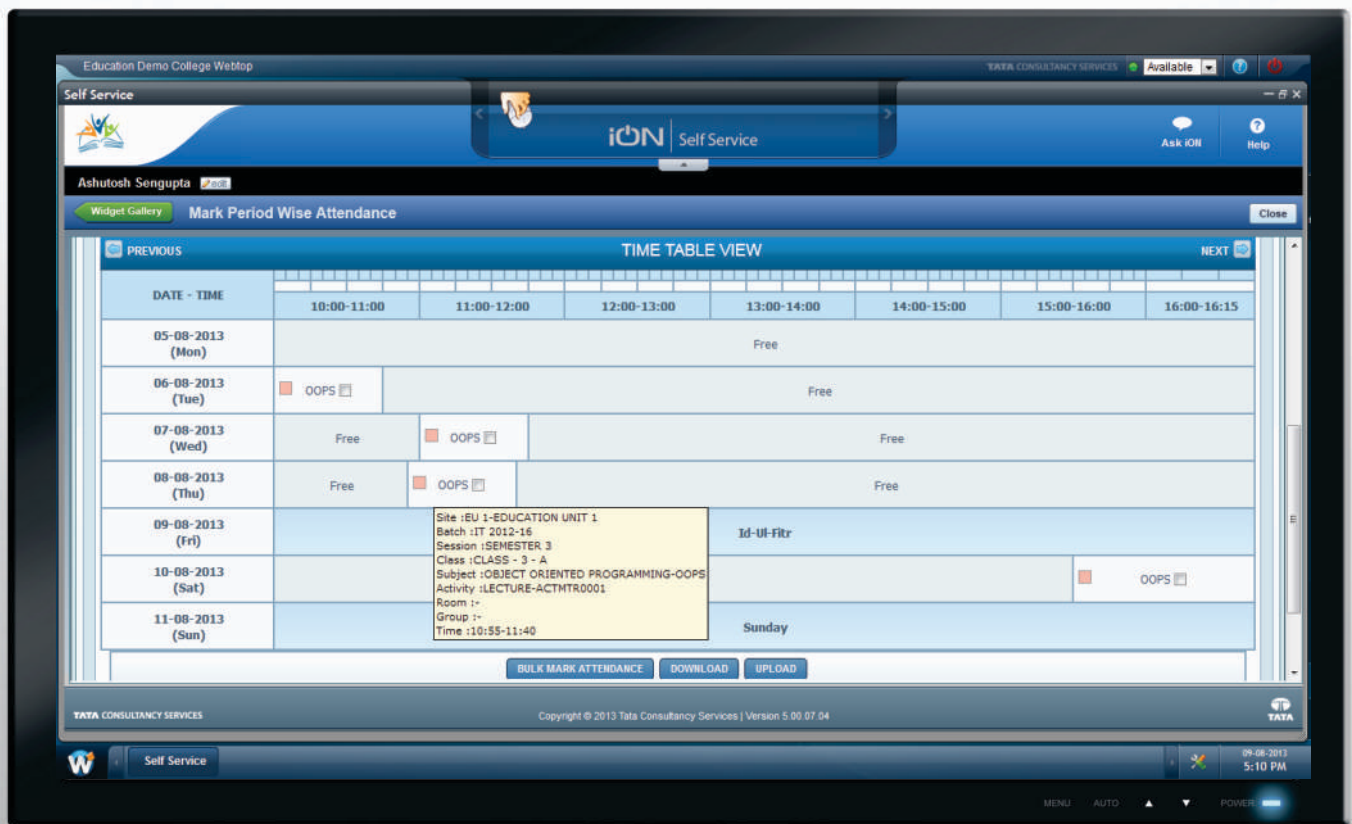
- Academics - Timetable and Exam & Grading
- Admissions
- Fee Collection
- Letter Printing
- Student Leave
- Discipline
- Student Scholarship

### Human Resource Management System

#### Finance and accounting

*"...It has been a wonderful experience interacting with iON crew members. The strength of iON is its ability to bring the collective ingredients in the same bundle. The evolution methodology of iON is unique, which is by interacting and picking up the varied requirements from multiple organizations across the country including us. This will not only be a privilege but also a responsibility that Kristu Jayanti and its fellow institutions undertake in grooming a competent potential for the future. ..."*

**Bino Joseph,**  
Change Champion for iON Solution Activation



## Why iON

iON provides a comprehensive solution that addresses varied IT requirements of your organization. From hardware, network to ERP, iON is offered as a single service, in a pay-as-you-use model, allowing you to leverage the solution's true potential as your business grows. iON ensures integration of all processes along with ease of use of the software.

You gain from:

### **Integrated solutions**

We offer single- window IT with a pre-integrated suite of hardware, network, software and services. We ensure that your functions are digitized, automated and connected. For example, if you are using a CRM solution along with a core ERP (e.g Manufacturing), and have a document management system to organize supporting files and a HRMS, we ensure that these solutions are connected and work as one. So for you, it is simply one IT and not multiple applications. Integrated applications thus provide a comprehensive view of business enabling better decisions.

### **Increased agility**

We bring in the agility to keep pace with changing processes or a new line of business. We help you configure the processes to work as you currently do or the software recommends and allows you to choose industry best practices based on your business parameters. The solution gives you increased convenience allowing you to perform various tasks from your mobile device, no matter where you are. Being automatically compliant with statutory requirements, the solution ensures your company is always audit ready and legally compliant.

### **A pay-as-you-use model**

Our model eliminates capital investment up front as we facilitate procurement of the IT infrastructure and software on rent for the duration of the contract. Additionally, you only pay for the number of users who actually use the software. Thus, you pay as you use on a monthly basis which includes maintenance and training. Typically, the ROI exceeds rental within three months, when best practices are well followed.

### **Personalized solutions**

Although iON is a cloud service, the software is configurable to each business. You will always get the flavor of your business by picking and choosing what processes you would need. Furthermore, the multilingual capability of the software allows you to customize the solution label names to read in vernacular languages (like Hindi, Marathi, Tamil etc) enabling users to learn and operate the solution with ease.

### **Automatic upgrades**

We continuously invest in our solutions to incorporate best practices. The software is constantly enriched based on user feedback and industry and statutory changes. You will get the upgrades without disrupting your business operations or any additional cost. Being in perpetual beta ensures that there is no technology obsolescence.

### **Enhanced Business Continuity**

Our solution offers optimal performance in normal broadband connectivity along with a stringent security mechanism to ensure your data privacy is maintained. The capacity of the solution grows with your increasing computing needs and reduces the need for IT staff. The solution is resilient to failures as the service works from back-up data centers in the event of a disaster, ensuring continuity of business operations.



## TATA CONSULTANCY SERVICES

Experience certainty.



TATA CONSULTANCY SERVICES

Hardware + Network + Software + Services

### About TCS iON

TCS iON is a strategic unit of Tata Consultancy Services focused on Small and Medium Businesses as well as educational institutions. We provide technology by means of a unique IT-as-a-Service model, offering end-to-end business solutions for the sector.

TCS iON caters to the needs of multiple industry segments, through innovative, easy-to-use, secured, integrated, hosted solutions in a build-as-you-grow, pay-as-you-use business model. We serve our clients with the help of best practices gained through TCS' global experience, domestic market reach, skills, and delivery capabilities.

For more information, visit us at [www.tcsion.com](http://www.tcsion.com)

### Contact

To know more about the iON Education Solution

Toll Free Number 1800 209 6030

Email [ion.salessupport@tcs.com](mailto:ion.salessupport@tcs.com)



TCSiON.com



[youtube.com/  
iONCloud4SMB](https://youtube.com/iONCloud4SMB)

### About Tata Consultancy Services Ltd (TCS)

Tata Consultancy Services is an IT services, consulting and business solutions organization that delivers real results to global business, ensuring a level of certainty no other firm can match. TCS offers a consulting-led, integrated portfolio of IT and IT-enabled infrastructure, engineering, and assurance services. This is delivered through its unique Global Network Delivery Model™, recognized as the benchmark of excellence in software development. A part of the Tata Group, India's largest industrial conglomerate, TCS has a global footprint and is listed on the National Stock Exchange and Bombay Stock Exchange in India.

For more information, visit us at [www.tcs.com](http://www.tcs.com)

### IT Services

### Business Solutions

### Consulting

All content / information present here is the exclusive property of Tata Consultancy Services Limited (TCS). The content / information contained here is correct at the time of publishing. No material from here may be copied, modified, reproduced, republished, uploaded, transmitted, posted or distributed in any form without prior written permission from TCS. Unauthorized use of the content / information appearing here may violate copyright, trademark and other applicable laws, and could result in criminal or civil penalties.

Copyright © 2014 Tata Consultancy Services Limited